

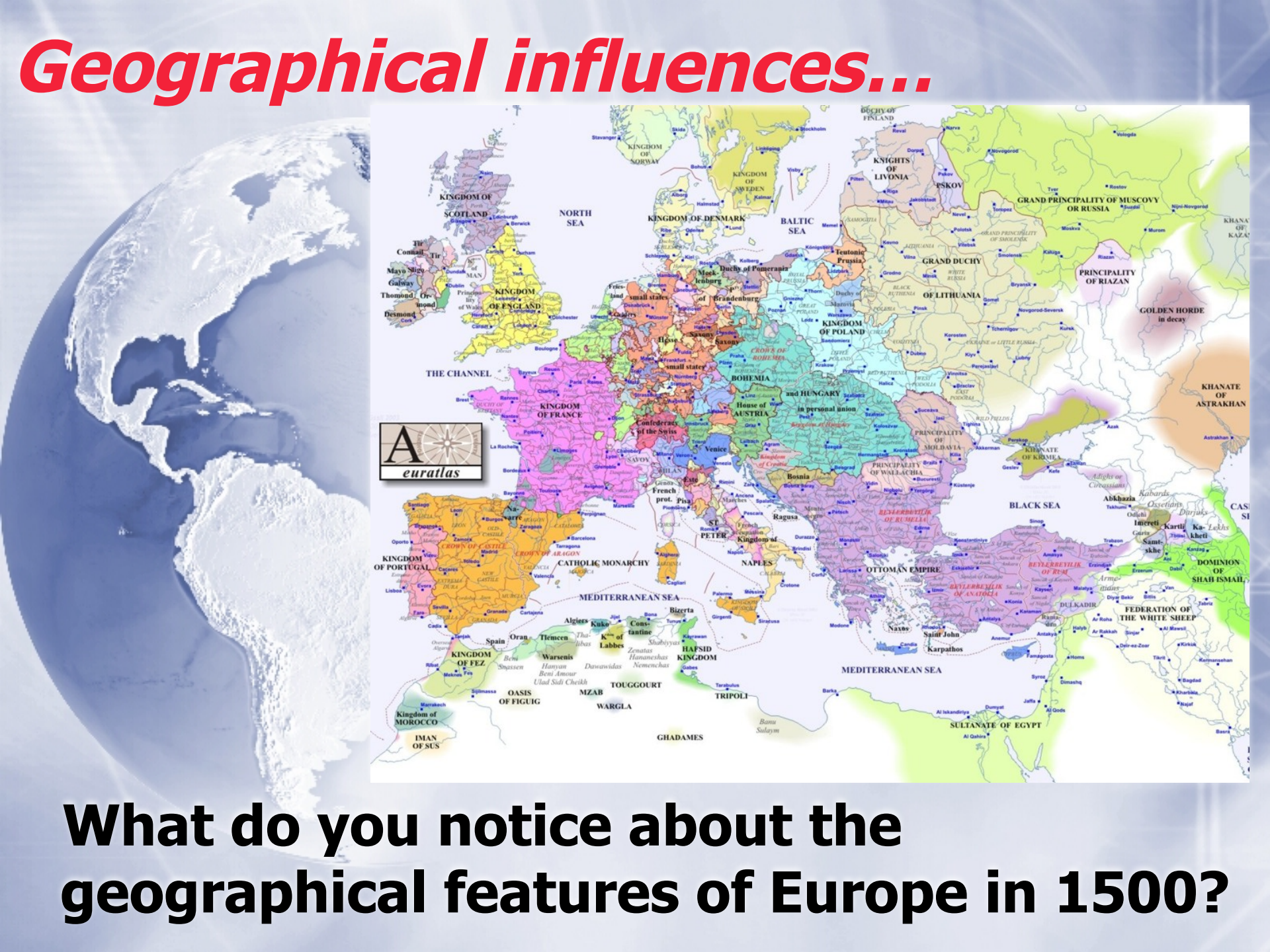
A geopolitical understanding of Medieval Europe



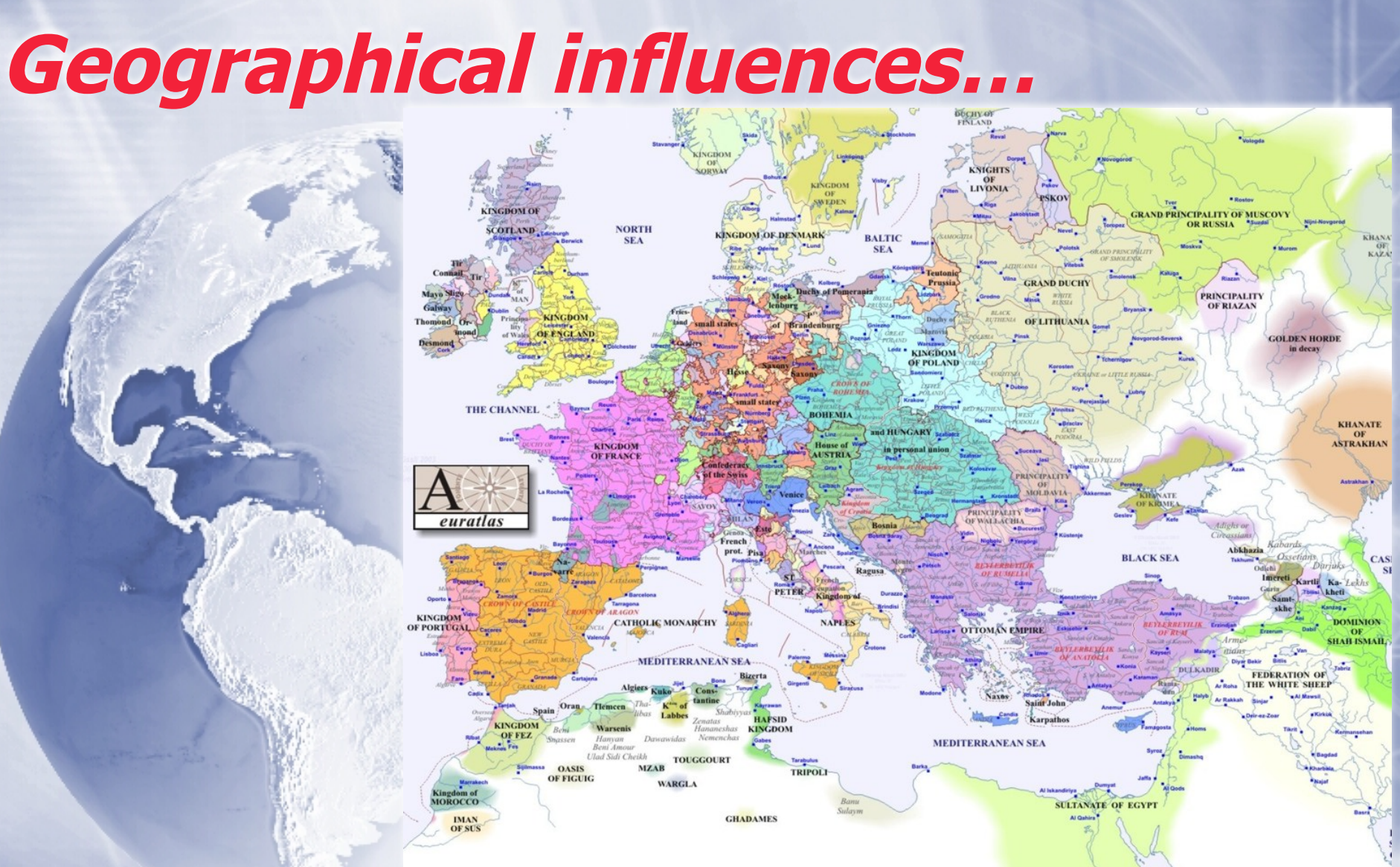
***And what such an understanding will
tell us about U.S. History***

What is a “geopolitical” understanding?

- ✧ A geopolitical understanding requires us to learn about how **geography, ethnicity, and religion** - influence both the domestic and foreign politics of a nation.
- ✧ Thus, we are going to examine how the geography, ethnicity and religion of Europe in the 15th, 16th, and 17th Centuries influenced the domestic and foreign policies of developing European regions and nations.
- ✧ This examination will help us understand how and why Europeans immigrated to North America.

[illegible]

Geographical influences...



The image displays a historical map of Europe and the Mediterranean region in 1500. The map is color-coded to show various kingdoms, principalities, and territories. Key features include the Kingdom of France, the Holy Roman Empire, the Ottoman Empire, the Mughal Empire, and the Kingdom of England. The map also shows the Mediterranean Sea, the Black Sea, and the Atlantic Ocean. A small inset map of the world is visible in the bottom left corner.

What do you notice about the geographical features of Europe in 1500?



- 

Between 1500-1800, which political unions grew at the expense of the others? Which shrunk?



Europe 1500



Europe 1800

By 1900, which nations grew at the expense of the others? Which nations shrunk?



Europe 1800



Europe 1900

What might have motivated Russia to expand south - and to try to expand to the southwest?



Europe 1900

Why do you think Spain, France, Portugal, and Great Britain failed to expand their European empires much between 1700-1900?



Europe 1900

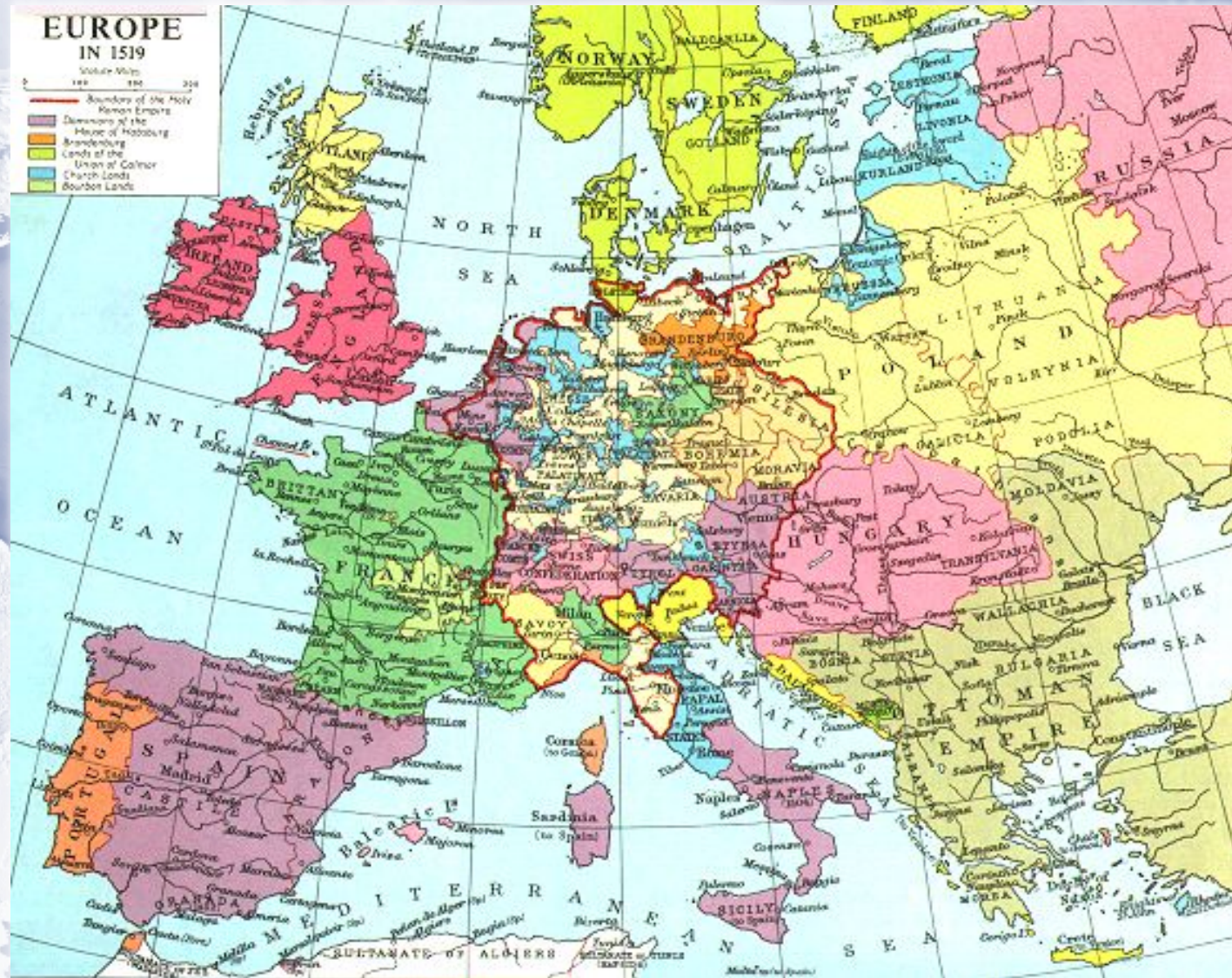
Ethnic inf



Europe 1300

What happens to people who were once sovereign, and then lose their sovereignty?

Religious influences...



What happens to people who are confronted by challenges to their religious beliefs?

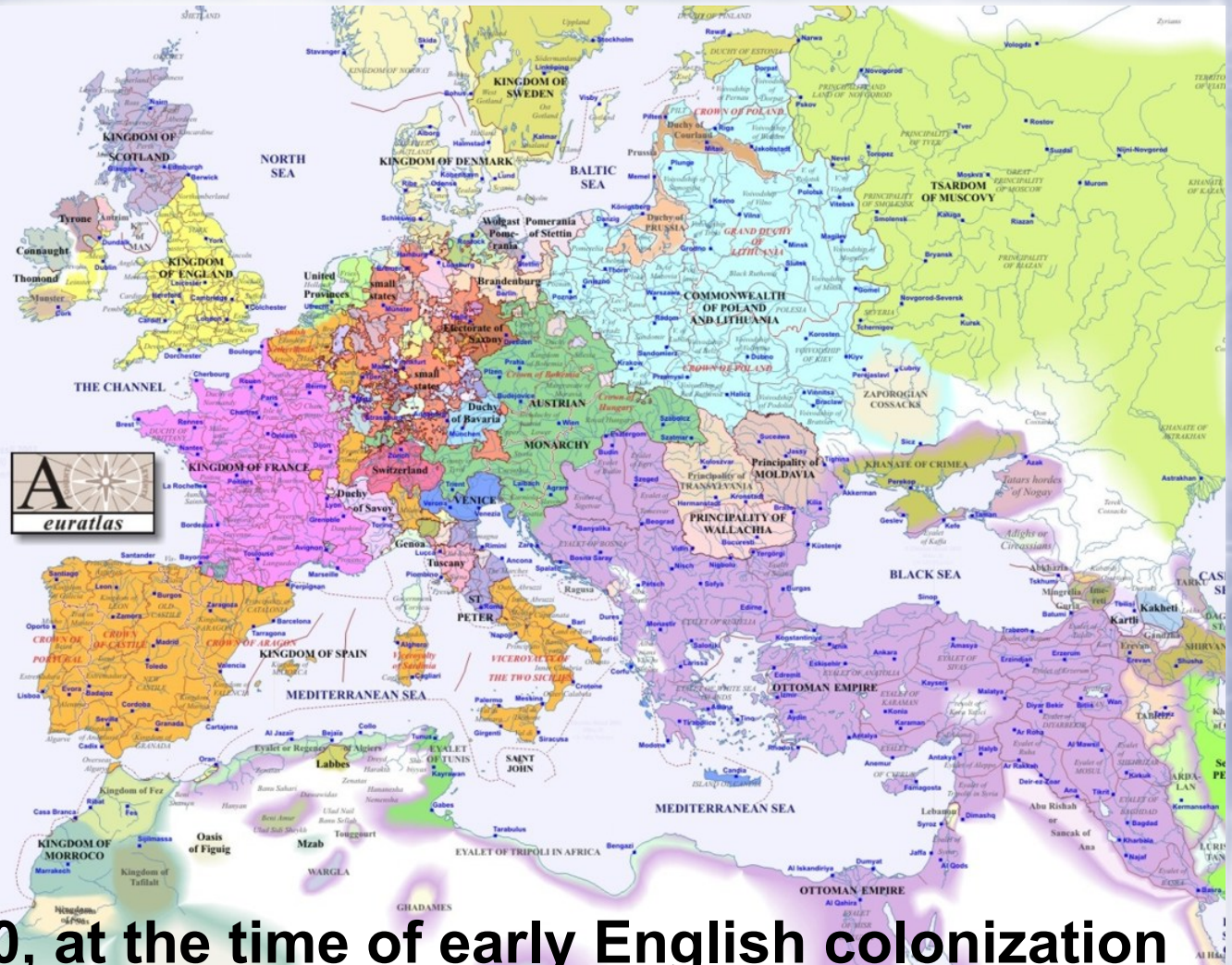
EUROPE AFTER THE REFORMATION

- | | |
|---|---|
|  Lutheran |  Anglican
(Church of England) |
|  Calvinist |  Huguenot centers |
|  Catholic | |

0 200 400
MILES



So, what does all of this have to do with U.S. History?



Europe in 1600, at the time of early English colonization efforts



In short...

The geopolitical nature - the geographical realities combined with the ethnic and religious traditions of a rapidly changing Europe in the 15th, 16th, and 17th Centuries - provide important clues as to why Europeans immigrated to North America.

To Review...

- ✧ **What geopolitical realities contributed to European immigration to North America?**
- ✧ **What ethnic realities contributed to European immigration to North America?**
- ✧ **What religious realities contributed to European immigration to North America?**